

AQUARIUM INSTRUCTIONS FOR USE

KEEP THESE INSTRUCTIONS FOR FUTURE REFERENCE

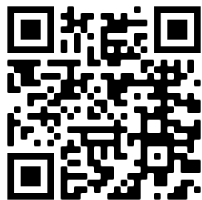
Children under the age of 13 should be supervised by an adult with the setup, maintenance and fish care



Aquarium Kit 6.5-Gallon
Model: AP650FFP

Scan QR Code to View Video

“Setting Up Your Fish Tank - 6.5-Gallon”



Important Safety Instructions

Please read this section before operating this unit. **For Household Use Only.** Confirm that your tank has not been damaged during shipment before you start the setup process.

Completely set up the aquarium before plugging filter and light into an electrical outlet.

To avoid having your plug or electric outlet becoming wet it is best to form a drip loop in your cords as shown. Use of a GFCI rated outlet or circuit is recommended.



1. Tank Placement

Leave enough space in back of the aquarium to allow easy access to the filter and various electrical cords from the electrical equipment. Good places for your aquarium, on a table or aquarium stand that's capable of bearing the weight of your filled aquarium.



Places to avoid, near direct sources of sunlight (e.g. windows) or unwanted algae growth can occur. Do not place near direct sources of heat or air conditioning (e.g. radiator, forced air vent), around sources of noise (e.g. stereo speakers, TV), and drafty areas. Do not place aquarium on any good surface that can be damaged by water or where water can come in contact with other electrical appliances.

2. Rinse Gravel and Decor



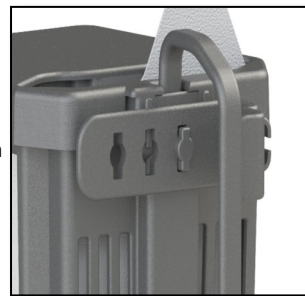
Rinse everything under running water; tank, gravel, stones, plastic plants and other decorations, etc. in colander or new bucket.

Never use soaps as they can harm your fish.

3. Power Filter Assembly and Set Up

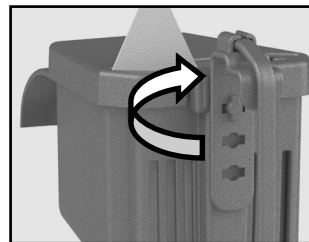
A

Remove filter from packaging. Position the hanger bracket onto the mounting post in the top hole, positioning it at 90°.



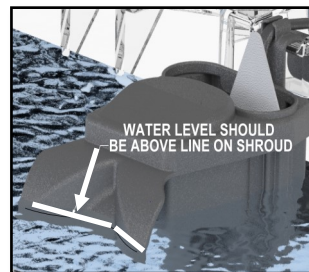
B

Rotate the hanger bracket upwards until it is vertical.



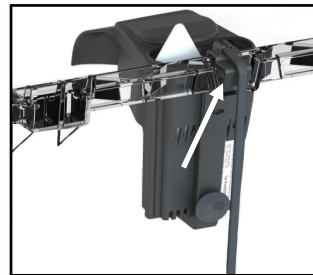
C

Please note, after you complete filling the aquarium with water, the water level should be at or slightly above the water mark line on the front of the shroud diffuser.



D

Place the Hanging Bracket onto the notch on the back rim of the fish tank to stabilize the filter.



4. Adding Gravel

Once the power filter is securely in position on the tank, add gravel to the tank spreading it out evenly. When finished adding gravel, insert plastic plants and ornaments.



5. Adding Water

Fill the aquarium with water to the water level mark on the front of the filter, approximately one inch from top of the tank. Plug in the filter to begin water circulation. Treat water with a tap water conditioner to remove chlorine and chloramines from tap water that can be harmful to your fish.

Confirm water temperature in aquarium has reached room temperature before adding fish



6. Power Adaptor

Insert the USB Micro-B connector plug into the power port on the light and plug power adaptor into a 120 volt outlet.

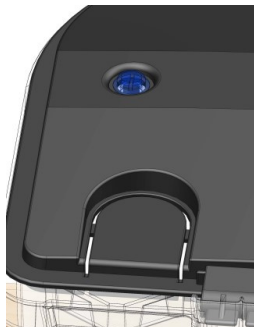
**Confirm a drip loop is formed in all electrical cords.
Use of a GFCI rate outlet or circuit is recommended.



7. LED Light Operation

To select preferred color, press down on the BLUE BUTTON. Each consecutive press of the button changes the color or setting. This LED light comes with 7 color choices along with four transitioning and color combinations to choose depending on time of day or your viewing pleasure.

Select from daylight white, green, blue, red, aqua, purple, and amber.



8. Optional Adding Heater

If adding a heater, remove cut-out at the back of the hood with snips or saw. Select a proper sized heater appropriate for your aquarium size. Check with your retailer for recommended heater settings. Adjust heater settings as directed and confirm water temperature with thermometer. Always use a power strip with surge protector to safeguard your electrical equipment.



9. Preparing to Add Fish

Before you add fish, let your aquarium run for 24 hours to allow the water to achieve room temperature.

Remove a couple cups of water from your aquarium so you can float the bag with your fish on the water's surface as you acclimate them.

10. Adding Fish

When selecting fish at the pet store be sure your new pets are healthy. Buy only active, healthy fish for your aquarium, check for sores, ragged fins or white spots on their bodies, these are signs of disease that you could be taking home to your aquarium. Ask the store associate to feed the fish to ensure they are eating. It is also important that you select fish that are compatible with each other. Bring your fish home as soon as you purchase them.

Open the bag containing your new fish, taking care that the bag does not collapse, and add a little aquarium water every two minutes directly into the bag. Continue this process for 10 minutes, allowing the bag to fill with water.

Take bag with fish to sink and gently scoop fish out with a net or pour bag of water into net. Position the net with your fish over aquarium water and release fish into aquarium. Do not add water from fish bag to aquarium in order to prevent introduction of possible disease or parasites from store water. Top off your aquarium to recommended water level line on the front of the power filter.

11. Aquarium Maintenance

Every three to four weeks depending on the number of fish you have and amount of daily feedings, you should siphon out 25% of aquarium water using a gravel vacuum. Do not lift or carry your aquarium or damage may result to it. Use a tap water conditioner to remove chlorine and other toxic substances from the fresh water that can harm your fish.

Change the filter cartridge at the same time or when heavily soiled and reduced filter flow. Power filter uses Koller Products replacement filter cartridges size Small (3-pack AQ10FC-30 or 6-pack AQ10FC-60) available at online retailers.



LED LIGHT FCC COMPLIANT



FCC Verification Tested
Certificate Of Conformity
PRSZ20082801E

This device complies with part 15 of the FCC Rules. Operation is subject to the following two conditions: (1) This device may not cause harmful interference, and (2) this device must accept any interference received, including interference that may cause undesired operation. Changes or modifications not expressly approved by the party responsible for compliance could void the user's authority to operate this device.

NOTE: This equipment has been tested and found to comply with the limits for a Class B digital device, pursuant to part 15 of the FCC Rules. These limits are designed to provide reasonable protection against harmful interference in a residential installation. This equipment generates, uses, and can radiate radio frequency energy and, if not installed and used in accordance with the instructions, may cause harmful interference to radio communications. However, there is no guarantee that interference will not occur in a particular installation. If this equipment does cause harmful interference to radio or television reception, which can be determined by turning the equipment off and on, the user is encouraged to try to correct the interference by one or more of the following measures:

- Reorient or relocate the receiving antenna.
- Increase the separation between the equipment and receiver.
- Connect the equipment into an outlet on a circuit different from that to which the receiver is connected.
- Consult the dealer or an experienced radio/TV technician for help.

LIMITED WARRANTY

KOLLER PRODUCTS LLC warrants this aquarium product to be free from defects in material and workmanship under normal use and service and according to the provisions as specified in the accompanying assembly and operating instructions, for a period of 1 year from date of purchase.

This warranty does not cover and KOLLER PRODUCTS LLC is not liable for the cost of repair or replacement of parts which have been subject to misuse, negligence, accident, improper installation, damage during shipment or handling, normal deterioration due to wear and exposure or defects caused by unauthorized parts or modification.

UNDER NO CIRCUMSTANCES WILL KOLLER PRODUCTS LLC BE LIABLE FOR ACCIDENTAL OR CONSEQUENTIAL DAMAGES, INCLUDING BUT NOT LIMITED TO LOSS OF PROPERTY OR EQUIPMENT.

Some states do not allow the exclusion or limitation of incidental or consequential damages, or limitation on how long an implied warranty lasts, so the above limitations or exclusions may not apply to you. This warranty gives you the legal rights, which vary from state to state.

**WARRANTY
CUSTOMER SERVICE
TECH SUPPORT
IF ANY COMPONENTS ARE
DAMAGED OR MISSING**

CONTACT
customer@kollerproducts.com
(800) 545-1344



To view our help videos please scan QR code or go to www.kollerproducts.com

Manufactured by KOLLER PRODUCTS LLC
Shawnee, KS 66218 USA